



Project Controls

EXPO

Project Controls Expo – 16th Nov 2017 Emirates Stadium, London

**Project Controls Transformation
Case Study – Tata Steel UK / Faithful + Gould**



Project Controls
EXPO

Copyright © 2011. All rights reserved

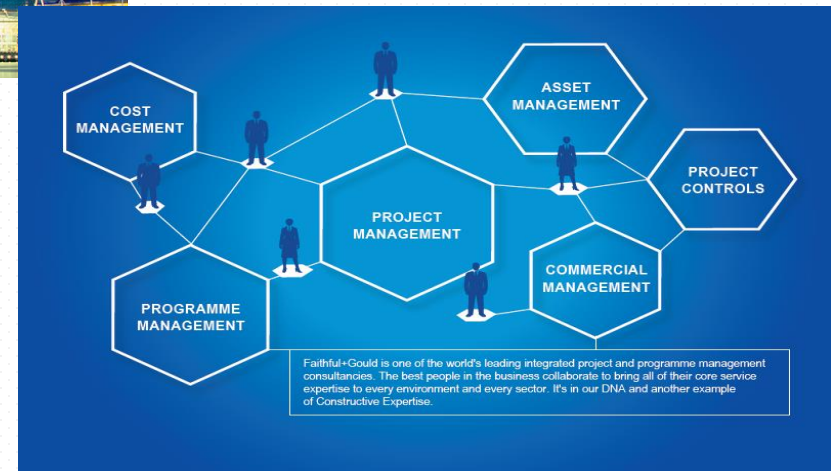
About the Speakers

- Rod Whiting, Regional Director, Faithful + Gould

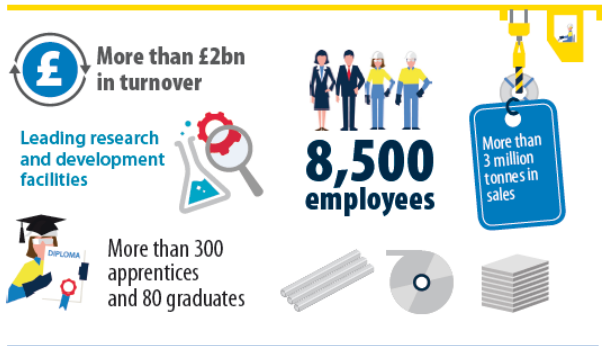


- Christian Burge, CapEx Portfolio Manager, Tata Steel Strip Products, UK

About the Speakers



About the Speakers



Tata Steel in the UK



Key investments

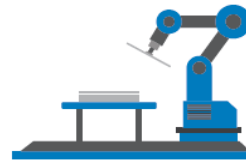
Tata Steel has invested £1.5 billion since 2007 to upgrade plant and technology at its UK operations, including:



One of Port Talbot's two blast furnaces rebuilt in 2013 as part of £250 million investment, which included a £55 million energy-from-heat scheme



Installation of a new £25 million 'reversing rougher' in 2014 – a major upgrade of the Hot Strip Mill at Port Talbot enabling it to further improve the quality of its steel products.



A new £4 million high-tech robotic welding line at Wednesfield's Automotive Service Centre optimises car panels for weight, cost, efficiency and sustainability – all without compromising safety.



About the Topic

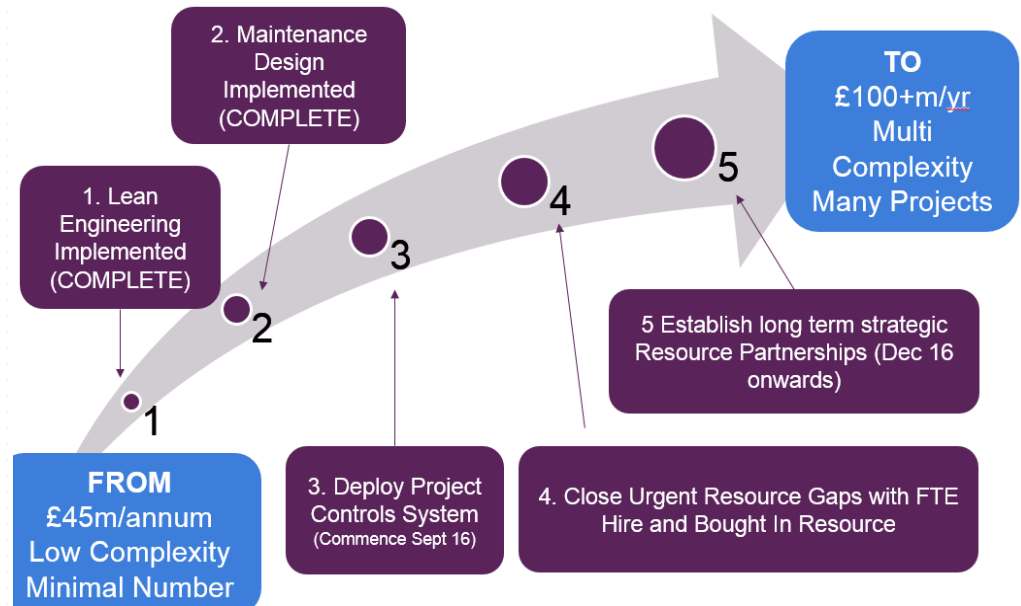
- Tata Steel UK recognised that their application of project controls was not at the level they needed to successfully deliver their capital programme to cost and time. This led them to look to the project controls market to seek a partner to help them move to a fit-for-purpose state where industry best practise could be implemented within their Company.
- The presentation will outline the journey from the assessment of current state (IBR); the Transition towards a functioning Project Controls team; including Implementation and Deployment Phases thereafter.

About the Topic



SPUK Project Delivery

Short/Medium Term Solutions



Fundamental Building Blocks & Principles

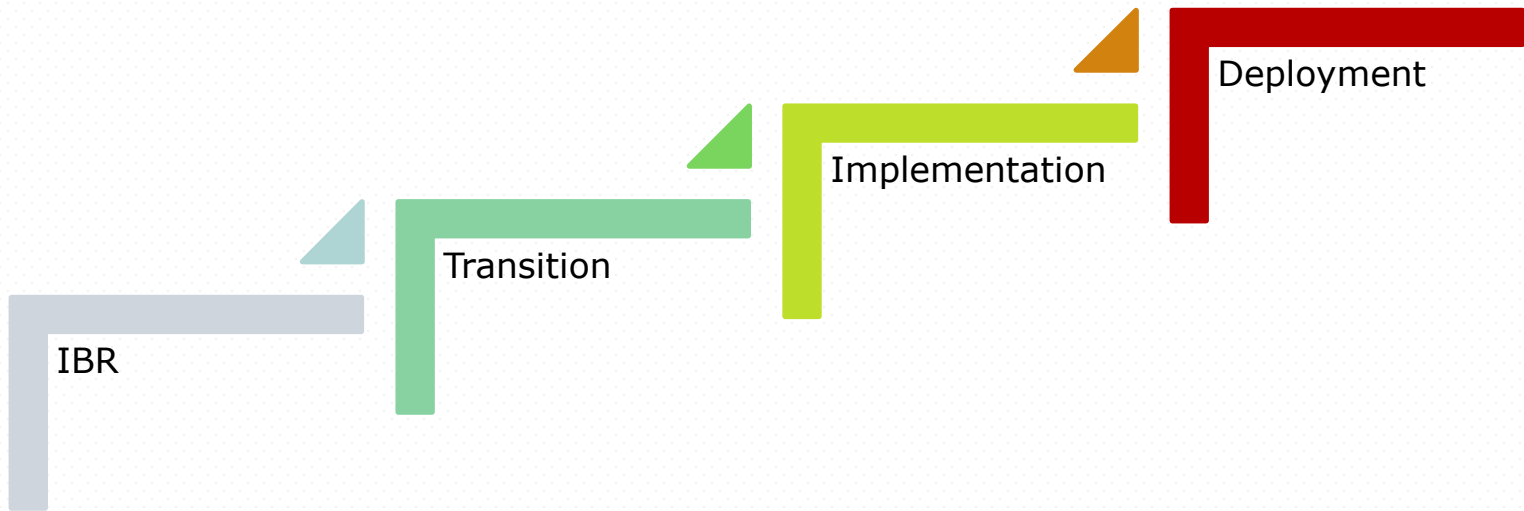
- ❑ Right People
- ❑ Right Tools
- ❑ Right Procedures
- ❑ Right Culture
- ❑ Zero Harm – Inherent Safe Design
 - (HS 1-6 ; Process Safety Adherence)



Fundamental Building Blocks & Principles

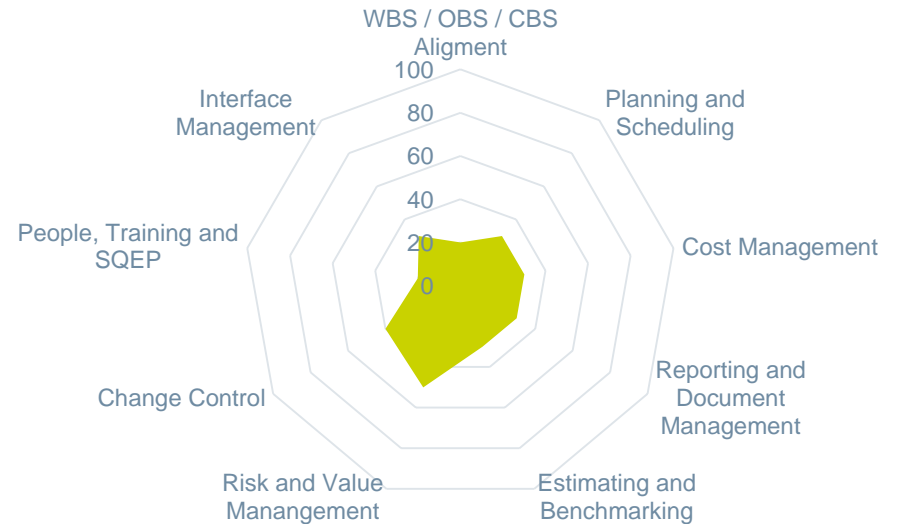
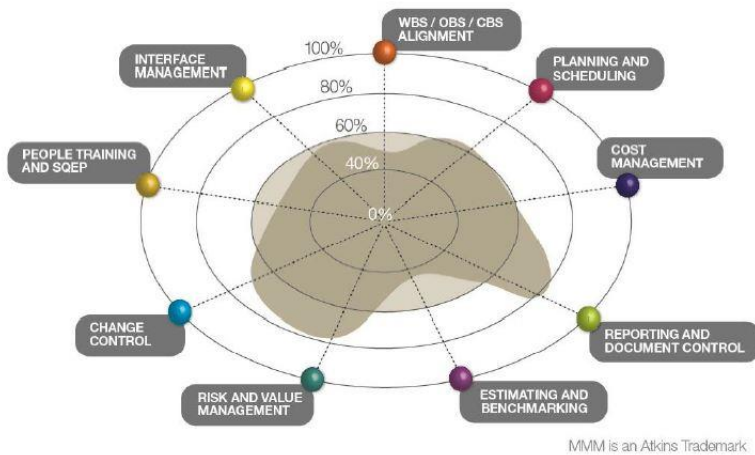


The Transformation Journey



IBR

Management Maturity Model



Transition

Handbook

Procedures

Guidance



Tool Set

Planning

Estimating

Cost Management

Risk Management

Change Management



Resource Plan



Training Packages



Reporting



Suppliers' Project Controls



SAP



Implementation

- Training
 - Awareness
 - Practitioner
 - Finance Business Partners
 - Procurement
 - E-Learning Module



Project Controls
Supporting safe delivery of projects to cost and time



Assessment instructions

Assessment

To check that what you have learnt there is short assessment consisting of 10 questions, all worth equal marks.

Please read the instructions for completing each question carefully before answering.

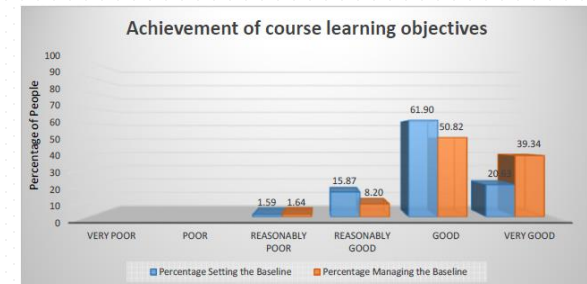
You will be given your result at the end of the test. The pass mark is set at 80%.

Click the 'Next' button to continue...

Common Questions

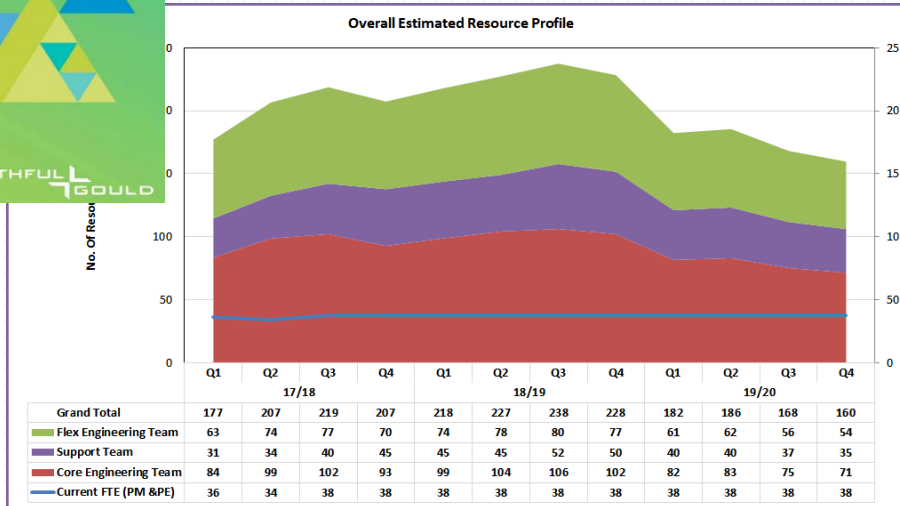
How much will it cost?

How long will it take?



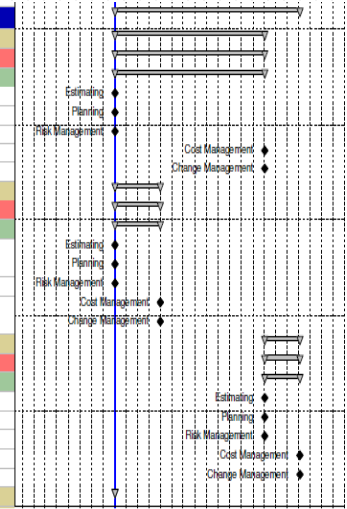
Deployment

Strategy



Resource Planning

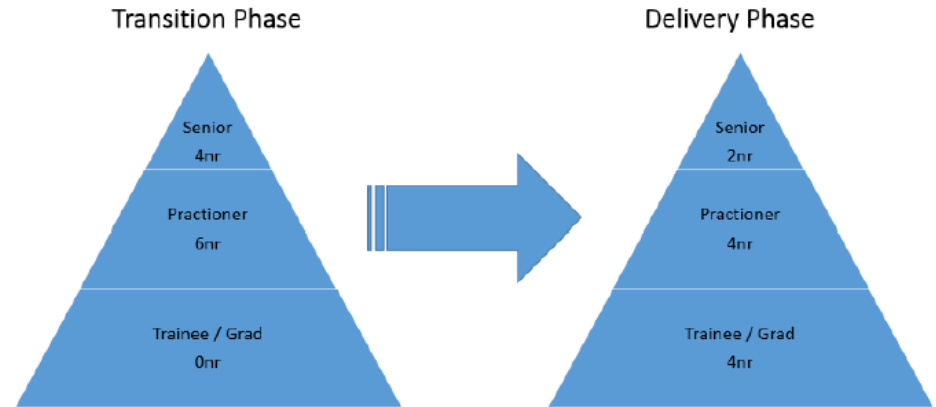
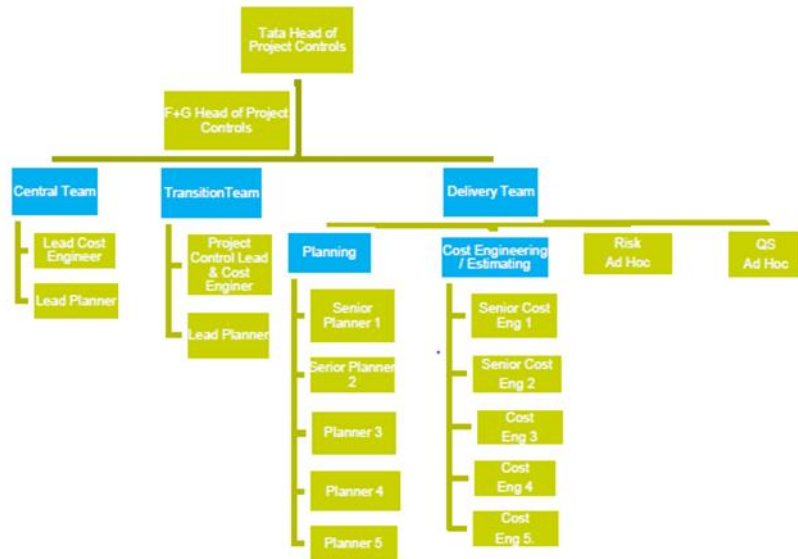
2000114.PC2	Estimating	01-Nov-17	0%	OSR Approved
2000114.PC1	Planning	01-Nov-17	0%	OSR Approved
2000114.PC3	Risk Management	01-Nov-17	0%	OSR Approved
2000114.PC4	Cost Management	02-Mar-18	0%	Form 2 Approved
2000114.PC5	Change Management	02-Mar-18	0%	Form 2 Approved
Casier 3 Segment 13 & DSR		03-Dec-18		
Key Milestones		03-Dec-18		
Project Control Milestones		03-Dec-18		
2000280.PC2	Estimating	03-Dec-18	0%	OSR Approved
2000280.PC1	Planning	03-Dec-18	0%	OSR Approved
2000280.PC3	Risk Management	03-Dec-18	0%	OSR Approved
2000280.PC4	Cost Management	04-Mar-19	0%	OSR Approved
2000280.PC5	Change Management	04-Mar-19	0%	OSR Approved
Replacement of Secondary Ventilation Fans and Casings		01-Nov-17		



■ Remaining Level of Effort
 ■ Actual Level of Effort
 ■ Primary Baseline
 ■ Remaining Work
 ■ Actual Work
 ■ Critical Remaining Work
 ◆ Milestone
 ◆ Milestone
 ▾ % Complete

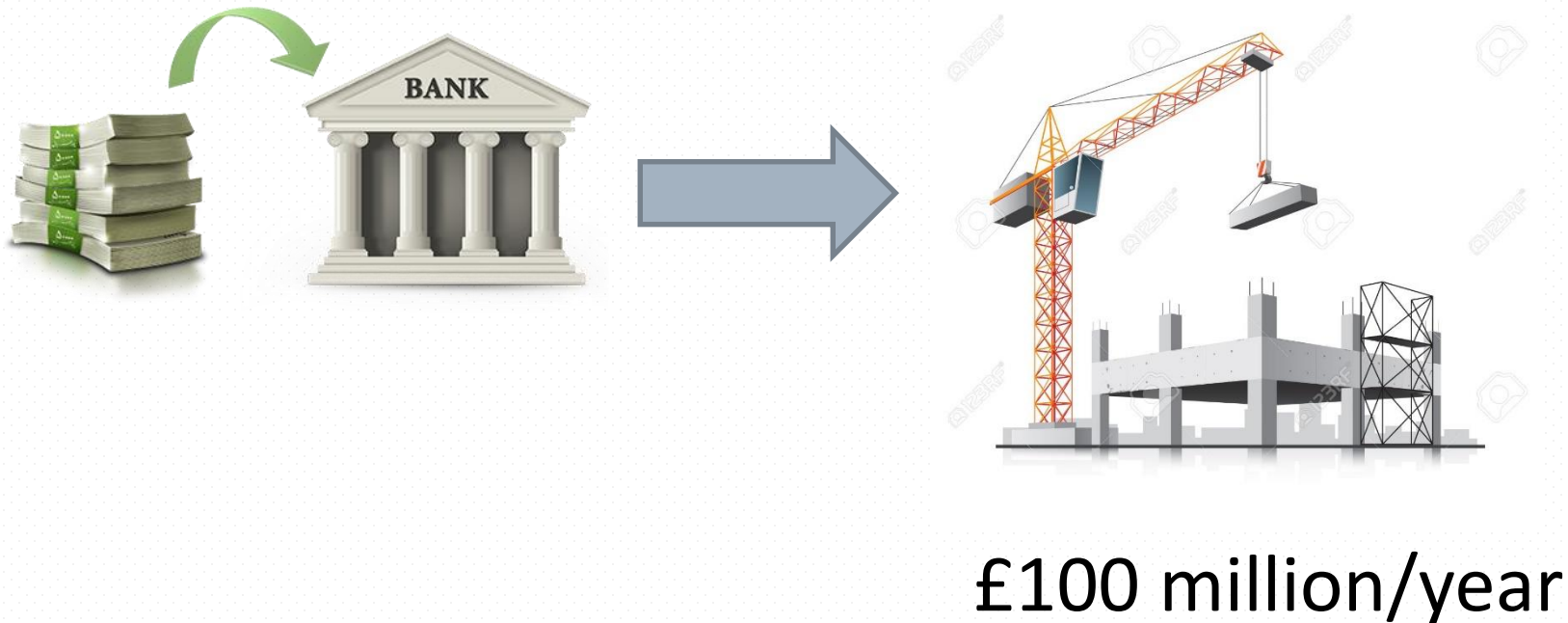
Deployment

Project Controls Resourcing

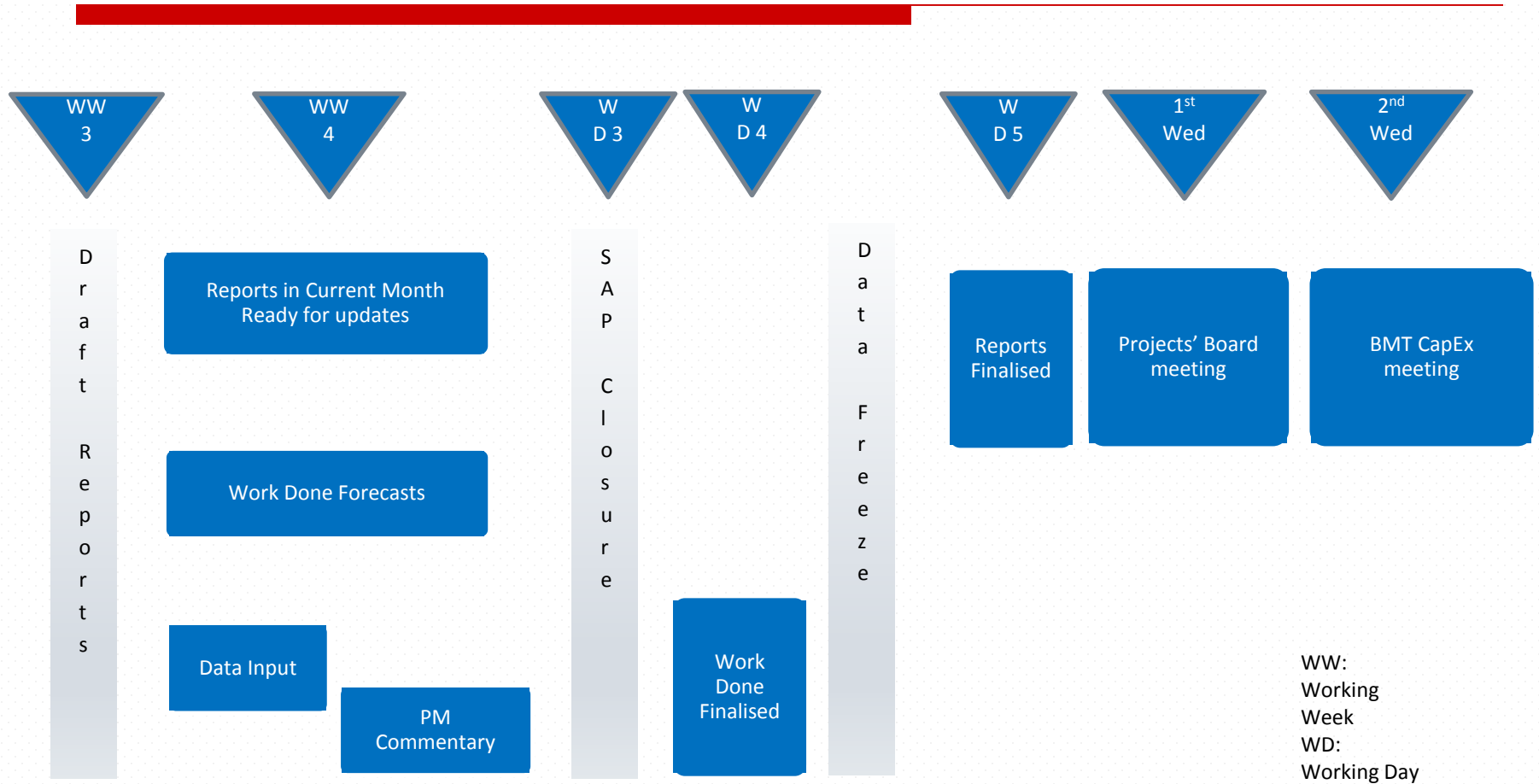


Budget Optimisation

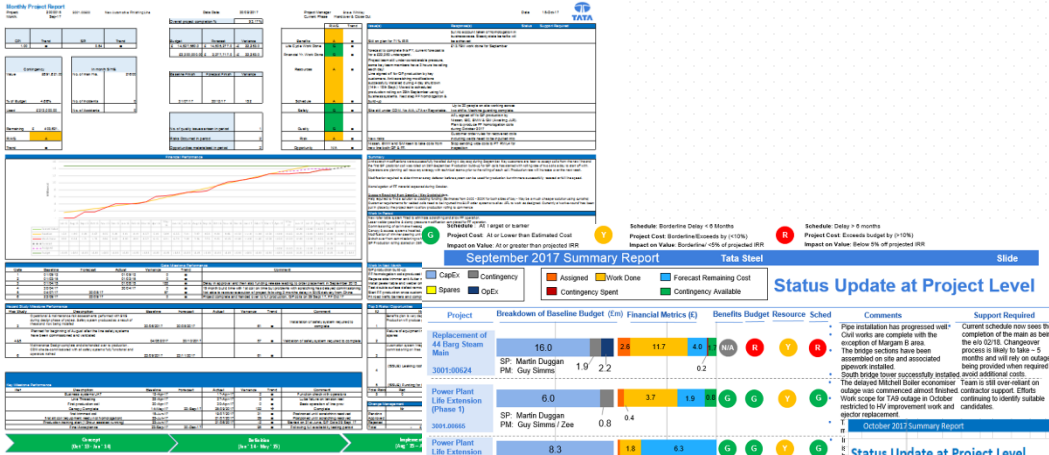
- Administer any hand-backs of any funds not required via the change control process.



Reporting Cycle

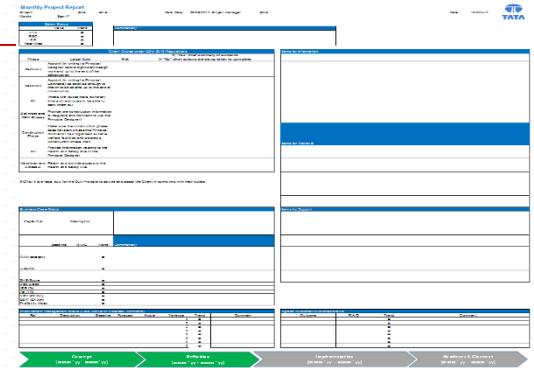


Monthly Reporting Output

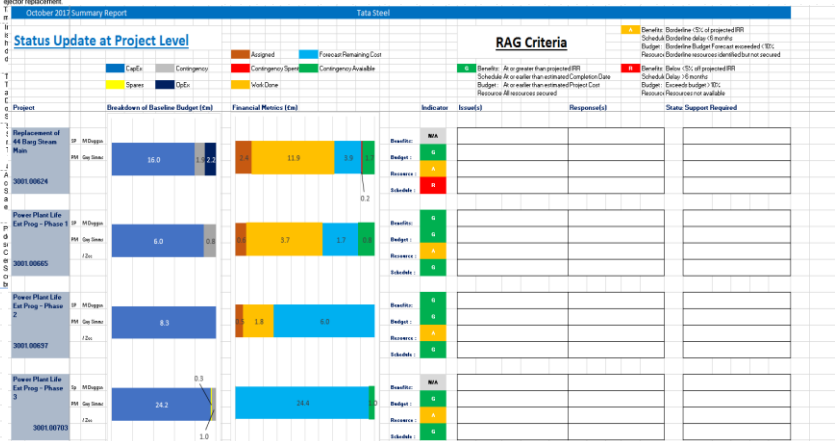


Standardised Monthly Project Reporting

Executive Reporting Dashboard



Project Steering Report – In development



Fully Automated

Summary

Vision: TSUK Wide Deployment

Key business units

- Strip Products UK**
 Steelmaking and processing mills at Port Talbot producing hot rolled and cold rolled coil; galvanising and pickling lines in Llanwern, Newport, and lime production in Cumbria, UK
- Electrical Steel**
 Grain-oriented electrical steels produced in Newport, part of a business with electrical steel plants in Surahammer, Sweden and Burlington, Ontario, Canada
- Colors**
 Galvanised metallic and pre-finished steel at Shotton in North Wales and coated narrow strip at Walsall in England's West Midlands
- Packaging steel**
 Tinplate and other packaging steels at Trostre near Llanelli in South Wales
- Tubes**
 Wide variety of steel tubes are manufactured at Corby in the English East Midlands and Hartlepool on Teesside
- Building systems**
 Wide range of metal cladding systems, comprising of both insulated panels and built-up engineered cladding and roofing solutions to provide ultimate design flexibility.
- Distribution UK & Ireland**
 UK's leading distributor of processed coil & sheet products with an extensive network of UK & Irish locations



Helping to strengthen manufacturers and infrastructure across Britain

Jaguar F-PACE
Tata Steel recognised by Jaguar Land Rover for the quality of the products it supplies from both of its UK automotive focused sites. Material supplied by Tata Steel used in Jaguar XE, XF and the new F-Pace as well as the Evoque, Discovery Sport and the all-new Discovery.

The Shard, London
As Western Europe's tallest building, The Shard has 87 floors with 1,000 tonnes of steel from Tata Steel's plant in Shotton, North Wales.

Domestic appliances
Tata Steel's site in Shotton supplies the majority of steel used in domestic appliances produced by Indesit.

Vauxhall Astra
Tata Steel supplies advanced, full-finish steels for the outer body panels of the new Vauxhall Astra, as well as ultra-highstrength, low-weight steels for its chassis.

The Royal Mint
Nearly all 1p, 2p, 5p and 10p UK coins in circulation originate from steel made in Port Talbot.

Wembley Stadium
Tata Steel supplied 22,000 tonnes of steel for Wembley Stadium manufactured at a number of locations, including Corby and Hartlepool.